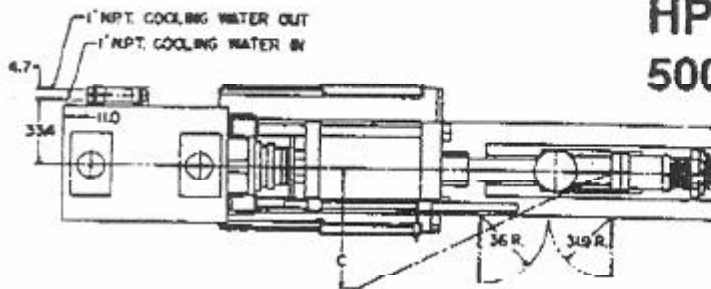
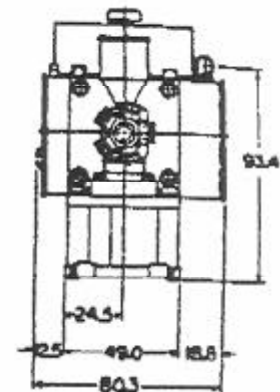
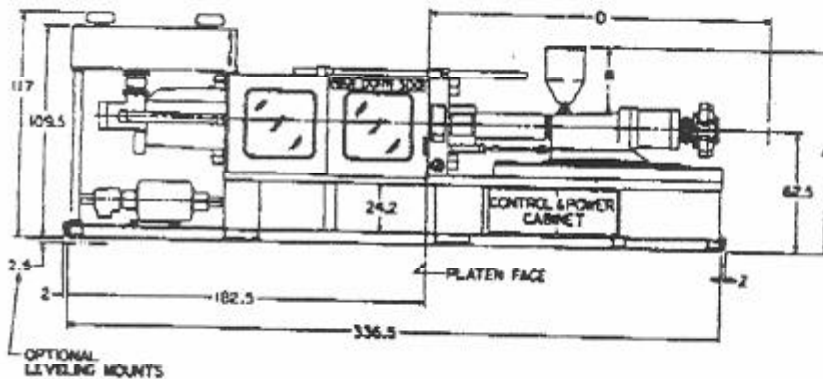


VAN DORN®

HP SERIES-HYDRAULIC CLAMP 500H-RS-30/48/60F



MACHINE	STD. BARREL			VENTED BARREL	
	A	B	C	D	D
500H-RS 30F	102.3	33.5	60	137	19.3
500H-RS 48F	102.3	33.5	62	175	29.0
500H-RS 60F	104.3	35.5	64	177	2.21



	500RS 30F	500-RS 48F	500-RS 60F
INJECTION UNIT			
Inject Capacity-Calculated (cu. in.)	59.2	89.0	111.5
Inject Capacity-G.P. Polystyrene (oz.)*	30	48	60
Recovery Rate-G.P. Polystyrene (oz./sec.)†	2.84	3.15	2.97
Injection Pressure-Max. (p.s.i.)	20,000	20,000	20,000
Inject Rate-at 10,000 p.s.i. (cu.in./sec.)	41.5	41.7	43.8
Inject Stroke (in.)	11.50	12.63	14.31
Screw Diameter (in.)	2.96	2.96	3.15
Screw Diameter (mm)	65	75	80
Barrel L/O Ratio	20:1	20:1	20:1
Screw Speed Range (R.P.M.)	30-320	30-250	30-199
Back Press Adjust (screw rotating) (p.s.i.)	75-300	75-300	75-300
CLAMPING UNIT			
Clamp Force (tons)	500	500	500
Clamp Opening Force (tons)	23	23	23
Clamp Stroke-Max. (in.)	40	40	40
Open Daylight-Max. Ejector Box (and spacer) removed (in.)	68++	68++	68++
Mold Thickness-Min. Ejector Box (and spacer) installed (in.)	12++	12++	12++
Ram Spacer Thickness (in.)	4	4	4
Ejector Box Thickness (in.)	12	12	12
Platen Size-Std-HxV (in.)	47X47	47X47	47X47
Platen Size-Opt-HxV (in.)	51X47	51X47	51X47
Dist. Between Rods-Std-HxV (in.)	32.5X32.5	32.5X32.5	32.5X32.5
Dist. Between Rods-Opt-HxV (in.)	36.5X32.5	36.5X32.5	36.5X32.5
Tie Rod Diameter (in.)	5.5	5.5	5.5
Clamp Speeds: Closing-Fast (in./sec.)	30	30	30
Opening-Fast (in./sec.)	28	28	28
Ejector Force (tons)	12.5	12.5	12.5
Ejector Stroke (in.)	6	6	6
Ejector Speed: (w/d retract) (in./sec.)	10.8/14.5	10.8/14.5	10.8/14.5

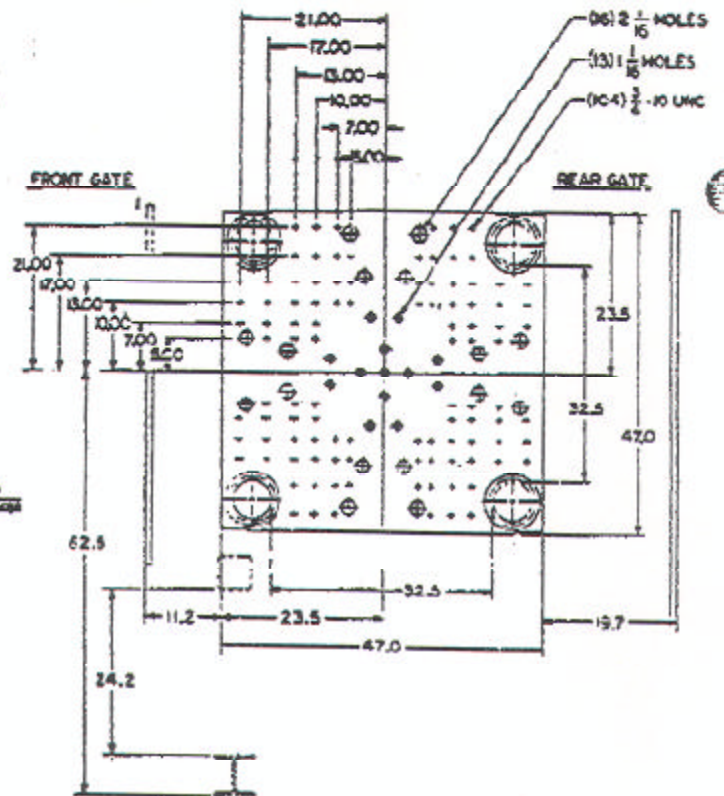
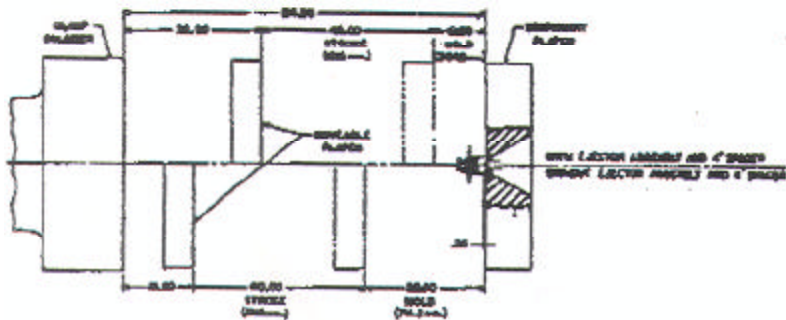
	500-RS 30F	500RS 48F	500-RS 60F
POWER			
Pump Motor (Motor/HP)	75	75	75
Barrel Heating Wattage (KW)	20	29.8	28.3
Number of Heat Control Zones	4	4	4
CONTROL			
Multi-Microprocessor W/Display Screen	Yes	Yes	Yes
Closed Loop Process Control	Yes	Yes	Yes
Control Voltage (V)	110	110	110
Control Voltage (Solenoids) (Vdc)	24	24	24
HYDRAULIC			
Variable Volume Pump Type	Piston	Piston	Piston
Screw Motor Type	Piston	Piston	Piston
GENERAL SPECIFICATIONS			
System Pressure (Inject/Clamp) (p.s.i.)	2000/2500	2000/2500	2000/2500
Comb. Pump Capacity (@ 100 p.s.i.)(G.P.M.)	121	121	121
Oil Capacity (Gal.)	420	420	420
Hopper Capacity (lb.)	145	145	225
Machine Weight (lb. approx.)	53,700	54,000	54,800
Machine Dimensions -Length (ft.)	28.3	29.8	30.0
-Width (ft.)	6.7	6.7	6.7
-Height (ft.)	9.8	9.8	9.8

* Dependent upon mold, material and conditions.

† Average value based on S.P.L. Test Procedures.

++ Extended tie bar spacing option reduces minimum mold thickness and maximum open daylight by 1/2".

Since continuous improvement is Van Dorn's policy, we reserve the right to change specifications, designs and performance data without prior notice or obligation.



MOVEABLE PLATEN

STANDARD FEATURES

Injection Unit

- In-line injection unit, non-rotating piston
- Radial piston screw drive motor
- Screw speed tachometer with digital set and display
- Cold screw startup protection
- Screw pullback before and/or after screw rotate
- Pivoting injection unit
- Swing-away hopper
- Bimetallic barrel

Clamp Unit

- Single acting main ram with twin outboard cylinders
- Self-lubricating bushings requiring only periodic lubrication
- Adjustable moving platen supports on hardened steel ways
- Full SPI knockout pattern
- Multiple eject sequences
- Eject forward hold
- Ratchet type stop bar

Hydraulics

- Energy efficient variable volume pump system
- Proportional and cartridge valve hydraulics
- 24 V DC solenoids

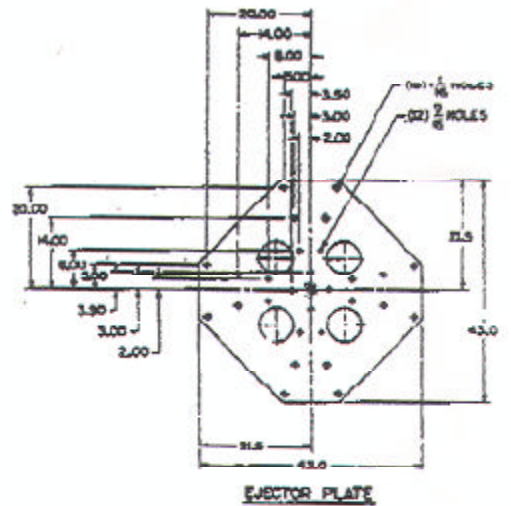
General

- Closed-loop oil temperature control
- High oil temperature and low oil level alarms
- Selectable oil preheat sequence
- Full-time oil filtration with alarm
- Drip pans under manifolds

Control

- Multi-microprocessor system
- Closed-loop process control
- PID temperature control
- Self-diagnostics with automatic troubleshooting
- Precision position sensing for clamp, inject, and eject
- Remote setup of clamp, inject and screw rotate speeds & pressures
- Remote setup of all positions

See your sales representative for available options.



EJECTOR PLATE

VAN DORN[®]